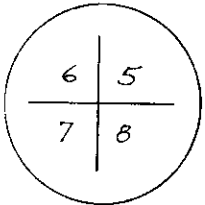


CERTIFIED LAND CORNER RECORDATION

T 14N, R 65W



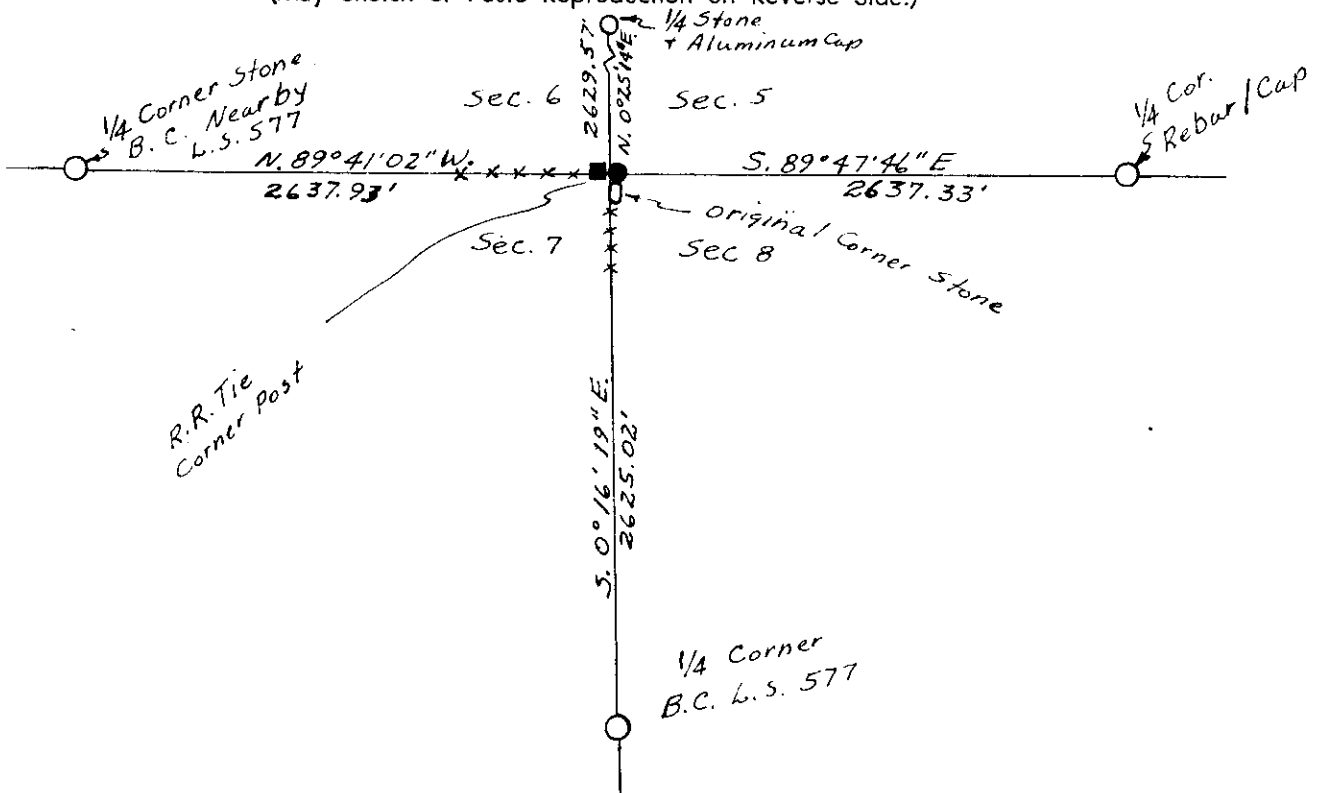
DESCRIPTION OF CORNER EVIDENCE FOUND, AND ORIGINAL RECORD (if known)

Found disturbed original corner monument lying in fence line 20' West of fence corner. Stone appeared to have been used as an anchor for a guy wire. Double proportional measure location fell two feet South and five feet West of fence corner. The fence corner location, being compatible with other corners in the area, was considered to be the best evidence available to the corner location.

DESCRIPTION OF MONUMENT AND ACCESSORIES ESTABLISHED TO PERPETUATE THE ORIGINAL LOCATION OF THIS CORNER:

Set a #5 Rebar with aluminum cap at N.E. corner of fence post. Also set original monument beside Rebar and fence corner post as a corner accessory.

SKETCH, WITH COURSE AND DISTANCE TO ADJACENT CORNER IF DETERMINED IN THIS SURVEY.
(May Sketch or Paste Reproduction on Reverse Side.)



I, Edward C. Fry certify that I have carefully performed ~~or reviewed~~ the work done on the diagrammed corner as reported on this recordation form and approve the same.

Edward C. Fry Wyo #662
Signature of Surveyor Registration No.

STATE OF WYOMING,
Office of Clerk and Recorder,
County of Laramie

195828

This "corner record" was filed for record on the 15 day of Aug, 1978, was noted on the cross-index plat and is assigned page No. _____, in book No. _____.

Janet C. Withead
County Official

Cross Index No. _____	T. _____	R. _____	Mer. _____
<u>E-5</u>	T. <u>14</u>	R. <u>65</u>	Mer. _____
_____	T. _____	R. _____	Mer. _____
_____	T. _____	R. _____	Mer. _____
_____	T. _____	R. _____	Mer. _____
_____	T. _____	R. _____	Mer. _____
_____	T. _____	R. _____	Mer. _____

E-5 14-65

495599

Photographed

Indexed *SP*

Filed *V*

Assessor *V*